



# sedApta Sales & Operations Planning Software Suite™

Is your supply chain not working at the speed of the markets?



## Why Sales & Operations Planning?

Sales & Operations Planning (S&OP) helps companies reach their business goals by balancing the overall demand for products, planning the entire supply chain and optimizing the production plan.

Inadequate management of this crucial business process, together with a lack of visibility of the value chain, leads to an undesirable increase in inventory, manufacturing and logistics costs, as well as much lower service levels.

If your company aims to achieve “best-in-class” performance and surpass the industry competition, it must be able to implement an efficient business S&OP process, which will only be as effective as the technology it utilizes.

**sedApta S&OP Software Suite™** is an innovative S&OP technology platform specifically designed to support your company’s business Sales & Operations Planning processes.



### S&OP’s Supply Chain Modules support:

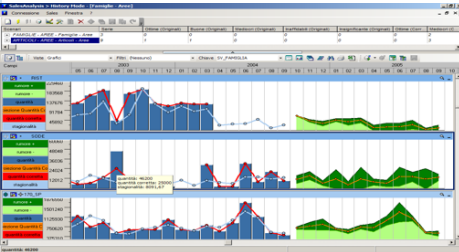
- ◆ Demand Management
- ◆ Inventory Planning
- ◆ Resource & Supply Planning
- ◆ Order Promising
- ◆ Web Supply Engine

### S&OP’s Execution Modules support:

- ◆ Factory Scheduling
- ◆ Shop Floor Monitoring

## Demand Management

Develops an accurate mathematical prediction of demand and facilitates the convergence towards a consensus forecast, using sophisticated mathematical algorithms able to harmonize sales forces, strategic inputs, and marketing and sales history.



### Features

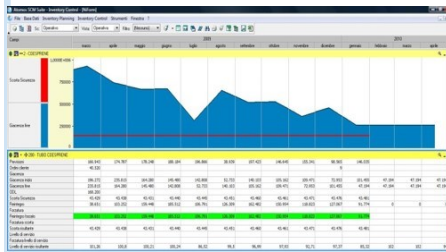
- ◆ Demand Forecasting
- ◆ Collaborative Forecasting
- ◆ Sales Planning
- ◆ What-If Analysis
- ◆ Advanced Algorithms

### Benefits

- ◆ Forecast accuracy improvement
- ◆ Communication enabler between sales teams
- ◆ Prompt reaction to market perturbations
- ◆ Supply cost reduction
- ◆ Safety stock level planning improvement

## Inventory Planning

Based on sales forecasts and their reliability, service level targets, stock level policies, supply lead times, inventory costs and existing customer orders, Inventory Planning generates the stock replenishment plan for the various supply chain echelons.



### Features

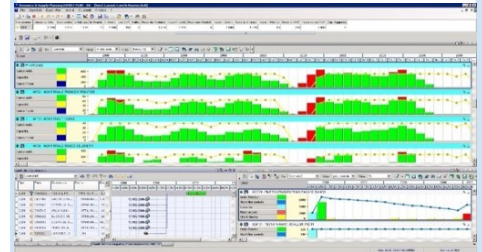
- ◆ Inventory Control
- ◆ Safety Stock Calculation
- ◆ Master Production Schedule Definition
- ◆ What-If Analysis
- ◆ Coverage Policies Management

### Benefits

- ◆ Inventory optimization
- ◆ Service level improvement
- ◆ Inventory cost reduction
- ◆ Supply cost reduction
- ◆ Planning time reduction

## Resource & Supply Planning

Resource & Supply Planning is able to validate the infinite capacity demand plan against the actual capabilities of the physical and logical resources of the logistics network, coordinating several production, financial and logistical constraints.



### Features

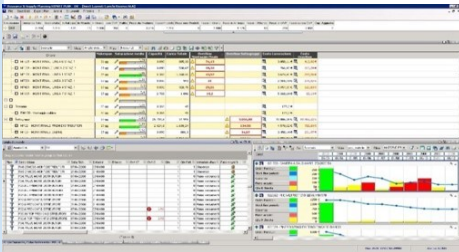
- ◆ Capacity Planning
- ◆ Capable-To-Promise
- ◆ Multi-Plant Resource Balancing
- ◆ What-If Analysis
- ◆ Strategic and Tactical Planning

### Benefits

- ◆ Better resource utilization
- ◆ Service level enhancement
- ◆ Prompt reaction to supply chain events
- ◆ Planning time reduction
- ◆ Accurate multi-plant resource balancing

## Order Promising

Order Promising is able to provide a complete picture of supply and demand in order to allow for reliable and time-effective commitment of delivery, considering the availability of stock, the production master plan and the rules of fair share.



### Features

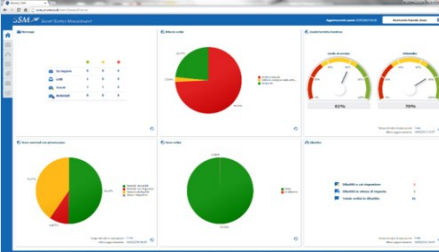
- ◆ Customer Order Fulfillment
- ◆ Customer Order Delivery Date Calculation
- ◆ Heuristics Management
- ◆ What-If Analysis
- ◆ Advanced Algorithms

### Benefits

- ◆ Customer service improvement
- ◆ Guarantee of promised delivery dates
- ◆ Stock level control and reduction
- ◆ Inventory cost reduction

## Web Supply Engine

sedApta Suite's Web Supply Engine facilitates communication with external contractors and suppliers, providing a unified environment for sharing and collaborating on proposals and work plans, debating, and document management.



### Features

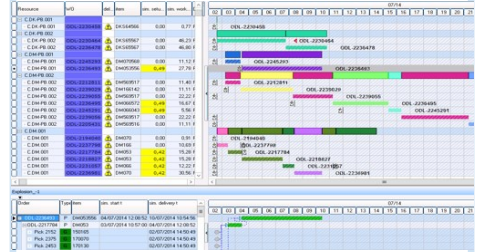
- ◆ Work Plan Collaboration
- ◆ Debating
- ◆ Notification Management
- ◆ Supplier Performance Evaluation
- ◆ Document Management

### Benefits

- ◆ Communication improvement
- ◆ Supply lead time reduction
- ◆ Fast and easy documentation sharing
- ◆ Prompt reaction to supply chain perturbations
- ◆ Real-time visibility

## Factory Scheduling

Factory Scheduling provides an optimum plan for all physical plant resources, taking into account orders, set up times, production priorities and constraints in order to minimize the transformation time, meet delivery deadlines and service level.



### Features

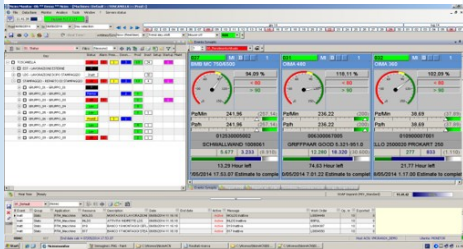
- ◆ Finite Capacity Resource Planning
- ◆ Detailed Order Sequencing
- ◆ Material Management
- ◆ What-If Analysis
- ◆ Advanced Algorithms

### Benefits

- ◆ Production time reduction
- ◆ Improved finite capacity work plan and order tracking
- ◆ Scheduling time reduction
- ◆ Inventory cost reduction
- ◆ Resource utilization improvement

## Shop Floor Monitoring

Shop Floor Monitor is a machine data collection system able to constantly feed the scheduling system with real-time data regarding line efficiency, order execution and machine statuses. It also provides OEE and KPI calculation as well as statistics related to production orders and machine downtime.



### Features

- ◆ Real-Time Visibility of Machine Performances
- ◆ Order Status Monitoring
- ◆ OEE and KPIs
- ◆ Downtime Management
- ◆ Tracking and Tracing

### Benefits

- ◆ Real-time reaction to production perturbations
- ◆ Real-time visibility of shop floor resources
- ◆ Reduction of waste
- ◆ Performance improvement



*Ready for  
Manufacturing & Supply Chain  
Optimization?*



## CONTACT US

### Address:

sedApta s.r.l.  
Via Dino Col 4N  
CAP 16141 – Genoa (GE),  
Italy

### Email:

info@sedApta.com

**Phone:** +39 010 9095547

**Fax:** +39 010 8602602

### Website:

www.sedApta.com